

PAST PROPRIETORS

DOUGLAS / HAMILTON

DOUGLAS / HAMILTON cont.

DOUGLAS / HAMILTON cont.

MOWAT FAMILY

EARLY HAMILTON FAMILY

HAMILTON of GOSLINGTON

HAMILTON of GOSLIN cont.

HAMILTON of CATCASTLE

HAMILTON of CANDER

HAMILTON of RAPLOCH

HAMILTON of RAPLOCH cont.

HAMILTON of STONEHOUSE

HAMILTON of GREEN

HAMILTON of MILLBURN

HAMILTON of CROFTHED

SINCLAIR / LOCKHART

SINCLAIR / LOCKHART cont.

HAMILTON of KITTIEUIR

LOCKHART FAMILY



Welcome

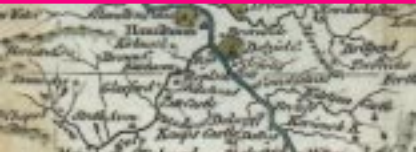
to the INTERACTIVE family history guide to past proprietors of Stonehouse. This additional research guide highlights three particular families with connections to Stonehouse; the Douglasses, the Lockhart's and the Hamilton's. Although this guide does not include all past proprietors, it does provide the reader with a detailed account of some of the more prominent families associated with the parish, as well as encouraging personal family history research.

The contents of this guide can be accessed by clicking on the menu bar to the left. If you wish to listen to MUSIC while you browse, click on the lower right corner of the page.

© **John R. Young 2002**

All rights reserved. No part of this CD may be copied, printed, or stored in a retrieval system, or transmitted in any form or by any means, electronic or otherwise without the permission of John R. Young. Music provided by kind permission of Keith Johnston, entitled 'Avonhaugh'.

PAST PROPRIETORS



Douglas Family / Hamilton Family *continued*

DOUGLAS / HAMILTON

DOUGLAS / HAMILTON cont.

DOUGLAS / HAMILTON cont.

MOWAT FAMILY

EARLY HAMILTON FAMILY

HAMILTON of GOSLINGTON

HAMILTON of GOSLIN cont.

HAMILTON of CATCASTLE

HAMILTON of CANDER

HAMILTON of RAPLOCH

HAMILTON of RAPLOCH cont.

HAMILTON of STONEHOUSE

HAMILTON of GREEN

HAMILTON of MILLBURN

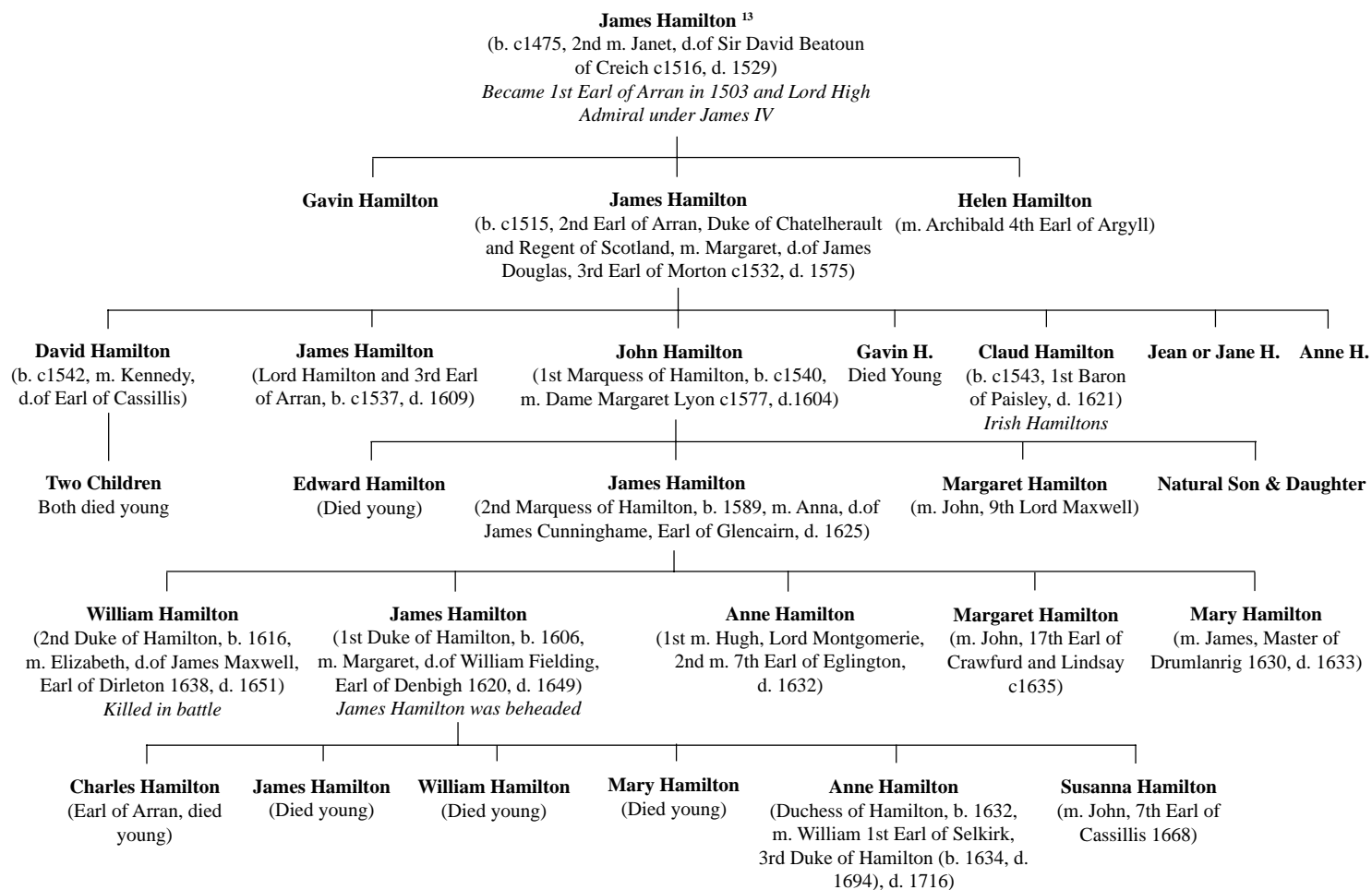
HAMILTON of CROFTHAD

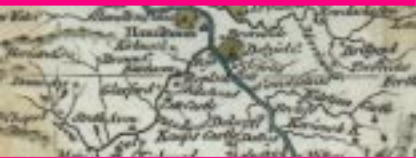
SINCLAIR / LOCKHART

SINCLAIR / LOCKHART cont.

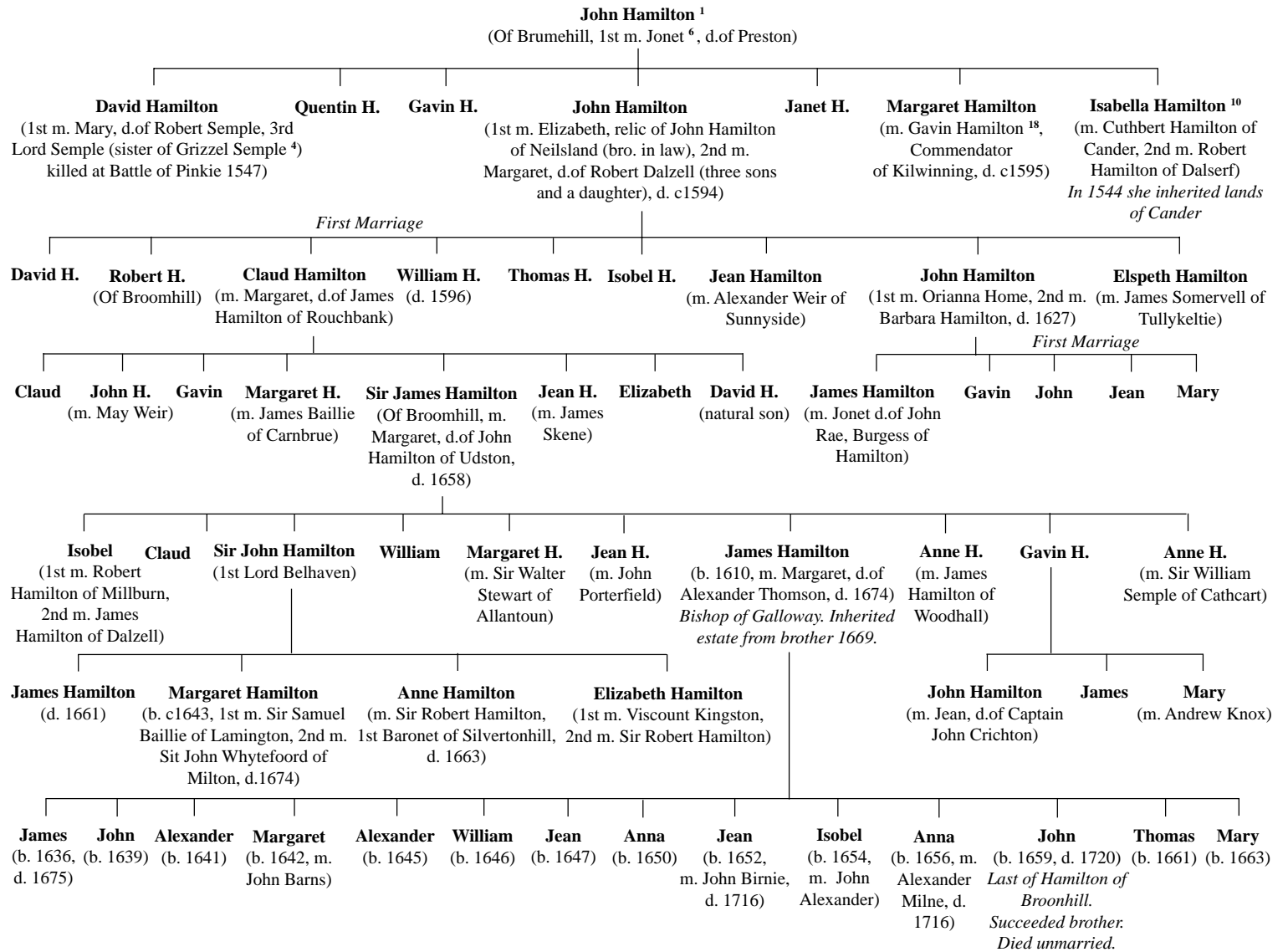
HAMILTON of KITTIEUIR

LOCKHART FAMILY





Douglas Family / Hamilton Family *continued*



DOUGLAS / HAMILTON

DOUGLAS / HAMILTON cont.

DOUGLAS / HAMILTON cont.

MOWAT FAMILY

EARLY HAMILTON FAMILY

HAMILTON of GOSLINGTON

HAMILTON of GOSLIN cont.

HAMILTON of CATCASTLE

HAMILTON of CANDER

HAMILTON of RAPLOCH

HAMILTON of RAPLOCH cont.

HAMILTON of STONEHOUSE

HAMILTON of GREEN

HAMILTON of MILLBURN

HAMILTON of CROFTHHEAD

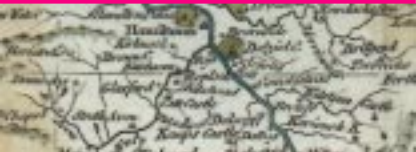
SINCLAIR / LOCKHART

SINCLAIR / LOCKHART cont.

HAMILTON of KITTIEUIR

LOCKHART FAMILY

PAST PROPRIETORS



DOUGLAS / HAMILTON

DOUGLAS / HAMILTON cont.

DOUGLAS / HAMILTON cont.

MOWAT FAMILY

EARLY HAMILTON FAMILY

HAMILTON of GOSLINGTON

HAMILTON of GOSLIN cont.

HAMILTON of CATCASTLE

HAMILTON of CANDER

HAMILTON of RAPLOCH

HAMILTON of RAPLOCH cont.

HAMILTON of STONEHOUSE

HAMILTON of GREEN

HAMILTON of MILLBURN

HAMILTON of CROFTHAD

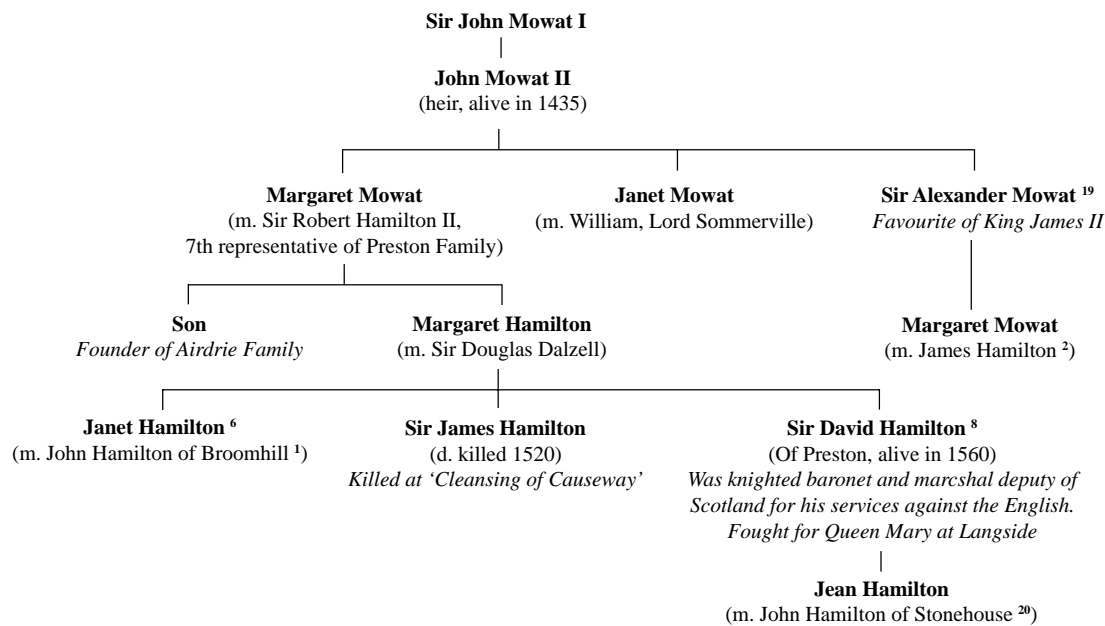
SINCLAIR / LOCKHART

SINCLAIR / LOCKHART cont.

HAMILTON of KITTIEUIR

LOCKHART FAMILY

Mowat Family



PAST PROPRIETORS



DOUGLAS / HAMILTON

DOUGLAS / HAMILTON cont.

DOUGLAS / HAMILTON cont.

MOWAT FAMILY

EARLY HAMILTON FAMILY

HAMILTON of GOSLINGTON

HAMILTON of GOSLIN cont.

HAMILTON of CATCASTLE

HAMILTON of CANDER

HAMILTON of RAPLOCH

HAMILTON of RAPLOCH cont.

HAMILTON of STONEHOUSE

HAMILTON of GREEN

HAMILTON of MILLBURN

HAMILTON of CROFTHEAD

SINCLAIR / LOCKHART

SINCLAIR / LOCKHART cont.

HAMILTON of KITTIEMUIR

LOCKHART FAMILY

Early Hamilton Family

Gilbert de Hameldone
(d. c.1290)



Walter Fitz Gilbert
(b. c.1275, d. c.1342)



David Fitz Walter Fitz Gilbert
(b. c.1320, d. c.1375)



Davis de Hamilton
(b. c.1350, d. c.1386)

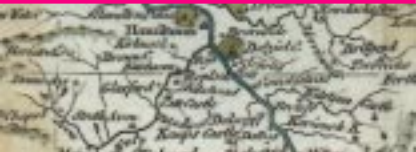


Sir John Hamilton of Cadzow
(b. c.1370, d. c.1402)



James Hamilton of Cadzow
(b. c.1390, from the Silvertonhill Family, m. Jacoba Douglas?, d. 1439)
Family continued under Hamilton of Raploch

PAST PROPRIETORS



DOUGLAS / HAMILTON

DOUGLAS / HAMILTON cont.

DOUGLAS / HAMILTON cont.

MOWAT FAMILY

EARLY HAMILTON FAMILY

HAMILTON of GOSLINGTON

HAMILTON of GOSLIN cont.

HAMILTON of CATCASTLE

HAMILTON of CANDER

HAMILTON of RAPLOCH

HAMILTON of RAPLOCH cont.

HAMILTON of STONEHOUSE

HAMILTON of GREEN

HAMILTON of MILLBURN

HAMILTON of CROFTHHEAD

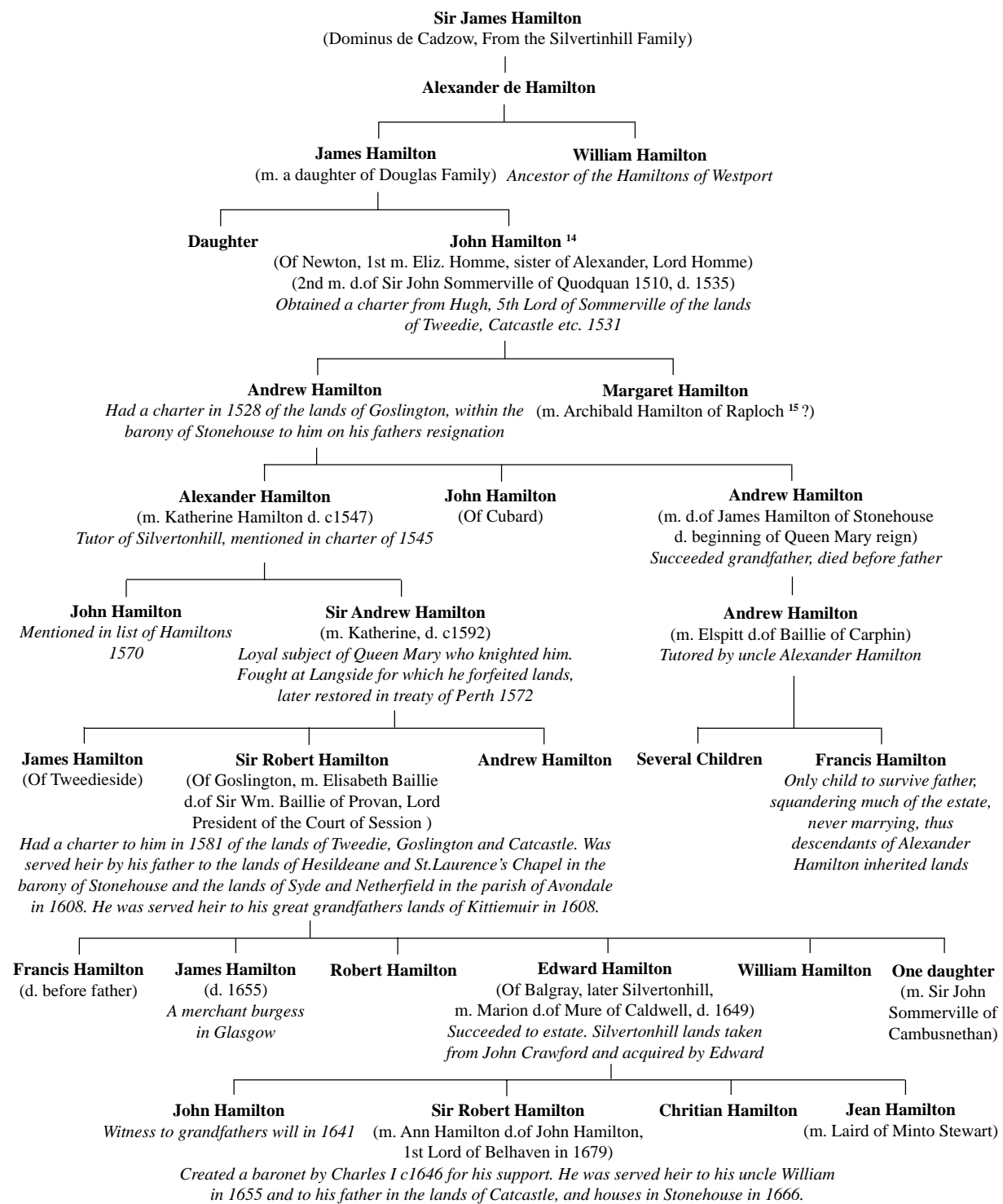
SINCLAIR / LOCKHART

SINCLAIR / LOCKHART cont.

HAMILTON of KITTIEMUIR

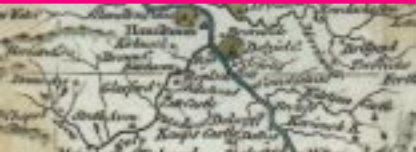
LOCKHART FAMILY

Hamilton of Goslington



Continued on next page

PAST PROPRIETORS



DOUGLAS / HAMILTON

DOUGLAS / HAMILTON cont.

DOUGLAS / HAMILTON cont.

MOWAT FAMILY

EARLY HAMILTON FAMILY

HAMILTON of GOSLINGTON

HAMILTON of GOSLIN cont.

HAMILTON of CATCASTLE

HAMILTON of CANDER

HAMILTON of RAPLOCH

HAMILTON of RAPLOCH cont.

HAMILTON of STONEHOUSE

HAMILTON of GREEN

HAMILTON of MILLBURN

HAMILTON of CROFTHEAD

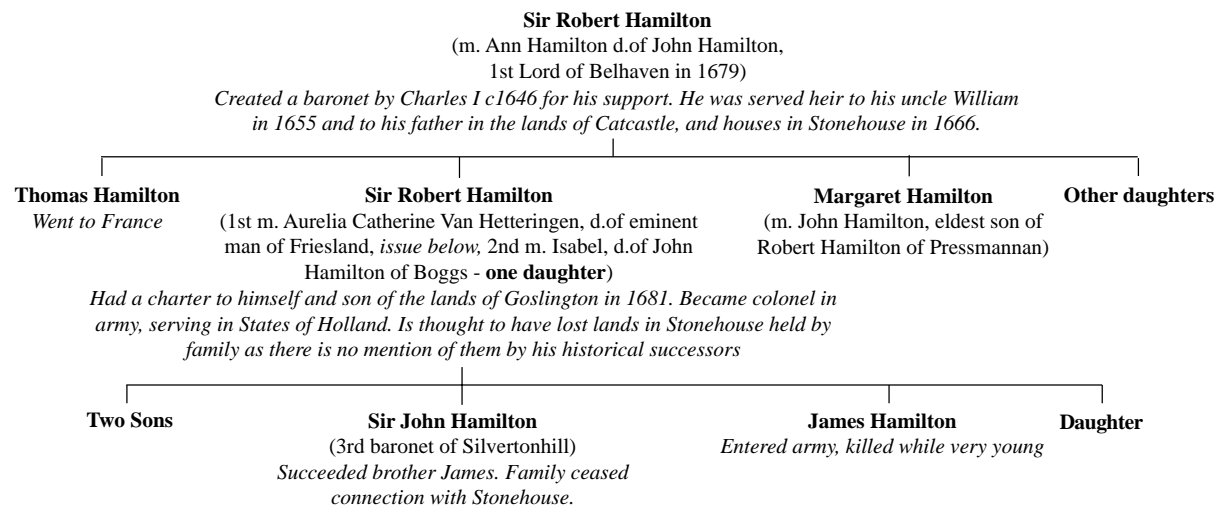
SINCLAIR / LOCKHART

SINCLAIR / LOCKHART cont.

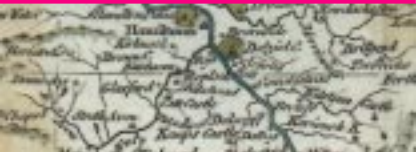
HAMILTON of KITTIEMUIR

LOCKHART FAMILY

Hamilton of Goslington *continued*



PAST PROPRIETORS



DOUGLAS / HAMILTON

DOUGLAS / HAMILTON cont.

DOUGLAS / HAMILTON cont.

MOWAT FAMILY

EARLY HAMILTON FAMILY

HAMILTON of GOSLINGTON

HAMILTON of GOSLIN cont.

HAMILTON of CATCASTLE

HAMILTON of CANDER

HAMILTON of RAPLOCH

HAMILTON of RAPLOCH cont.

HAMILTON of STONEHOUSE

HAMILTON of GREEN

HAMILTON of MILLBURN

HAMILTON of CROFTHEAD

SINCLAIR / LOCKHART

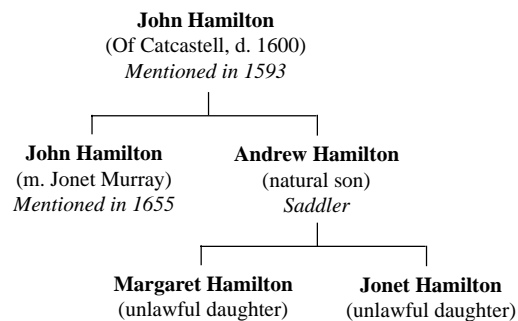
SINCLAIR / LOCKHART cont.

HAMILTON of KITTIEUIR

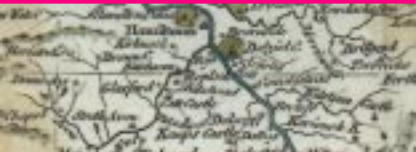
LOCKHART FAMILY

Hamilton of Catcastle

An Alexander Hamilton of Catcastell was a member of Assize in 1494. In 1526 George Hamilton of Cat castell resigned those lands into the lands of the superior, Lord Somervell, in favour of John Hamilton of Newton. In 1537 he granted obligation on behalf of Andrew Hamilton, natural son of Sir James Hamilton of Fynnart. A Robert Hamilton of Catcastell is mentioned in 1685 in the testament of James Hamilton of Hesledean.



PAST PROPRIETORS



DOUGLAS / HAMILTON

DOUGLAS / HAMILTON cont.

DOUGLAS / HAMILTON cont.

MOWAT FAMILY

EARLY HAMILTON FAMILY

HAMILTON of GOSLINGTON

HAMILTON of GOSLIN cont.

HAMILTON of CATCASTLE

HAMILTON of CANDER

HAMILTON of RAPLOCH

HAMILTON of RAPLOCH cont.

HAMILTON of STONEHOUSE

HAMILTON of GREEN

HAMILTON of MILLBURN

HAMILTON of CROFTHHEAD

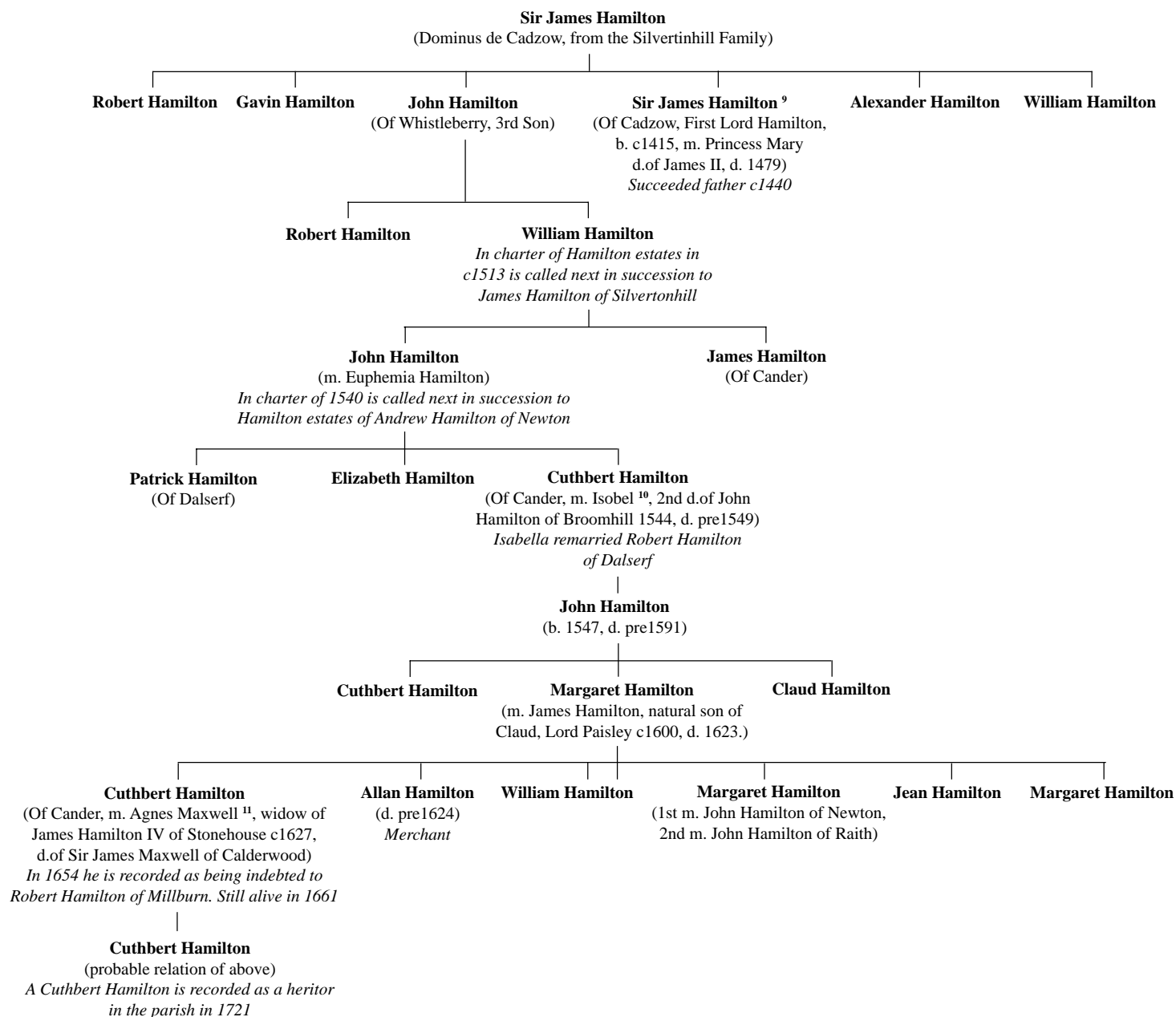
SINCLAIR / LOCKHART

SINCLAIR / LOCKHART cont.

HAMILTON of KITTIEUIR

LOCKHART FAMILY

Hamilton of Cander



PAST PROPRIETORS



Hamilton of Raploch *continued*

DOUGLAS / HAMILTON

DOUGLAS / HAMILTON cont.

DOUGLAS / HAMILTON cont.

MOWAT FAMILY

EARLY HAMILTON FAMILY

HAMILTON of GOSLINGTON

HAMILTON of GOSLIN cont.

HAMILTON of CATCASTLE

HAMILTON of CANDER

HAMILTON of RAPLOCH

HAMILTON of RAPLOCH cont.

HAMILTON of STONEHOUSE

HAMILTON of GREEN

HAMILTON of MILLBURN

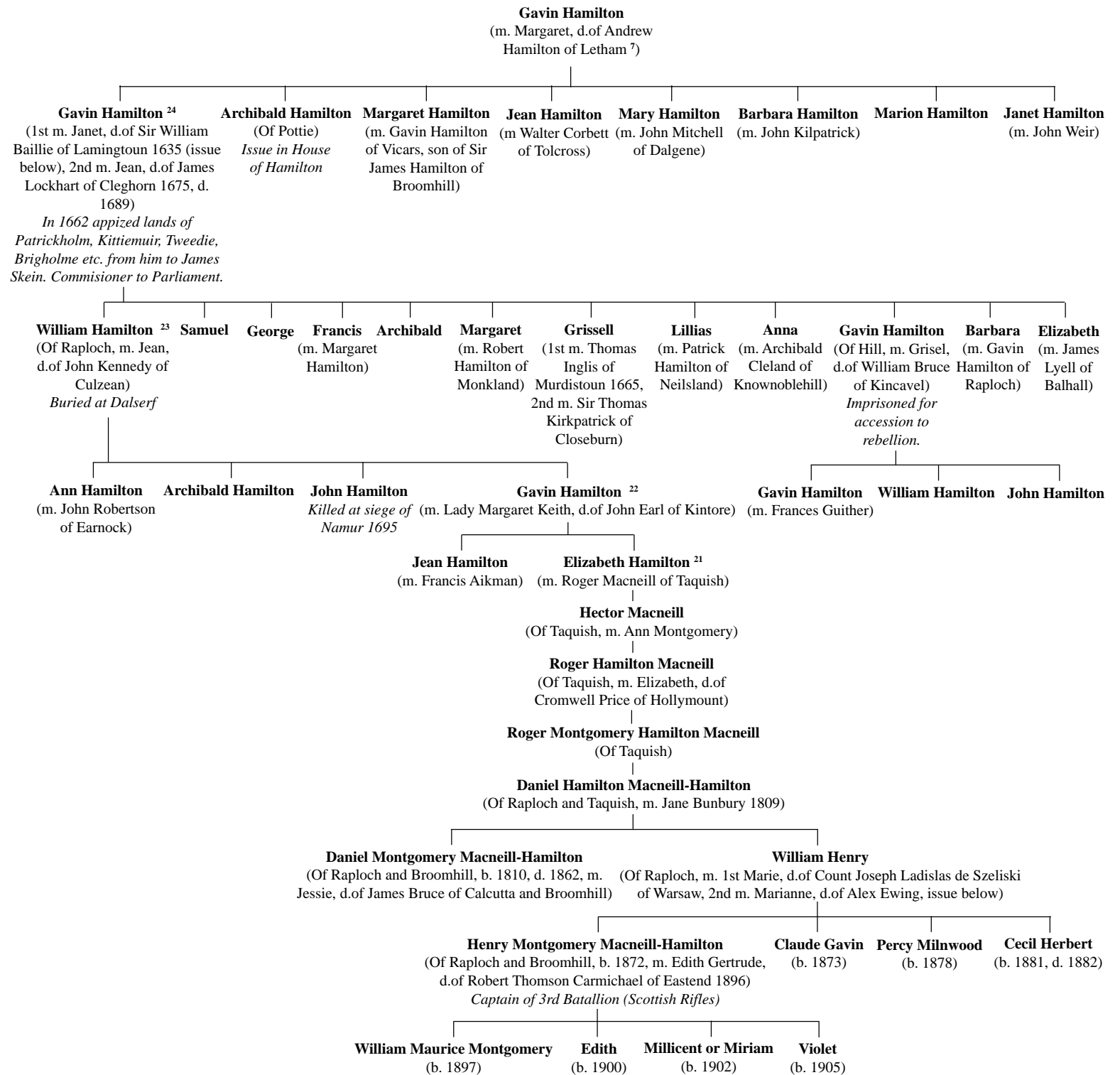
HAMILTON of CROFTHAD

SINCLAIR / LOCKHART

SINCLAIR / LOCKHART cont.

HAMILTON of KITTIEMUIR

LOCKHART FAMILY



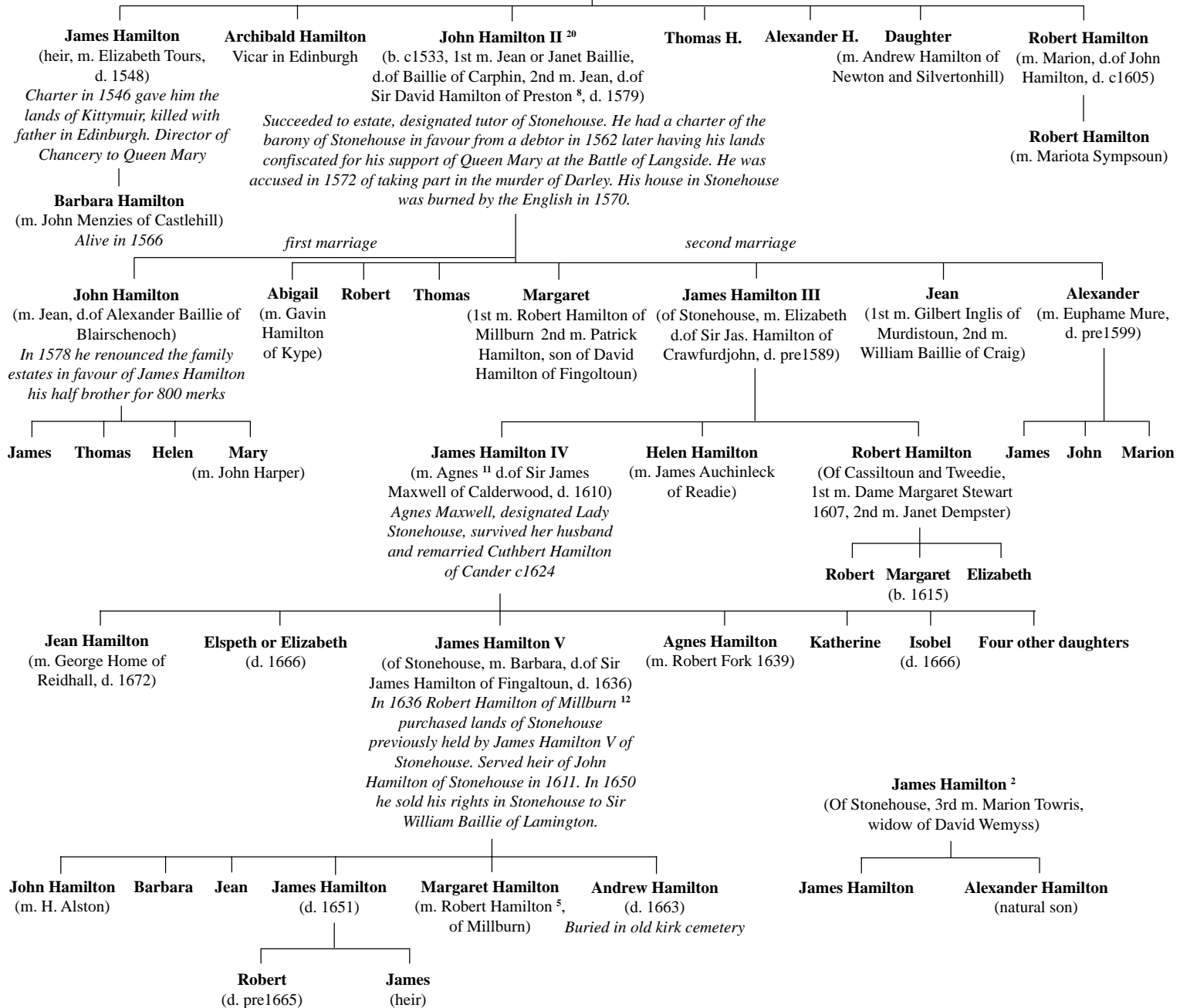
PAST PROPRIETORS



Hamilton of Stonehouse

James Hamilton ²

(Of Stonehouse, 1st m. Margaret, d.of Alexander Mowat ¹⁹ of Stonehouse, d. 1548)
'Scotlands Hero Captain', 1st of branch of Stonehouse Hamiltons, killed quelling disturbance in Edinburgh. He resigned the fee of the lands of Raploch into the hands of the superior James Hamilton, Earl of Arran in favour of his brothers Thomas, Archibald and Gavin upon a charter granted to them in 1521. He aquired a considerable portion of lands in the barony of Stonehouse by his wife and another from his kinsman and namesake of Kinavel ¹ in 1529



DOUGLAS / HAMILTON

DOUGLAS / HAMILTON cont.

DOUGLAS / HAMILTON cont.

MOWAT FAMILY

EARLY HAMILTON FAMILY

HAMILTON of GOSLINGTON

HAMILTON of GOSLIN cont.

HAMILTON of CATCASTLE

HAMILTON of CANDER

HAMILTON of RAPLOCH

HAMILTON of RAPLOCH cont.

HAMILTON of STONEHOUSE

HAMILTON of GREEN

HAMILTON of MILLBURN

HAMILTON of CROFTHAD

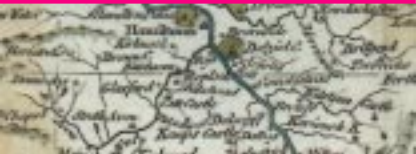
SINCLAIR / LOCKHART

SINCLAIR / LOCKHART cont.

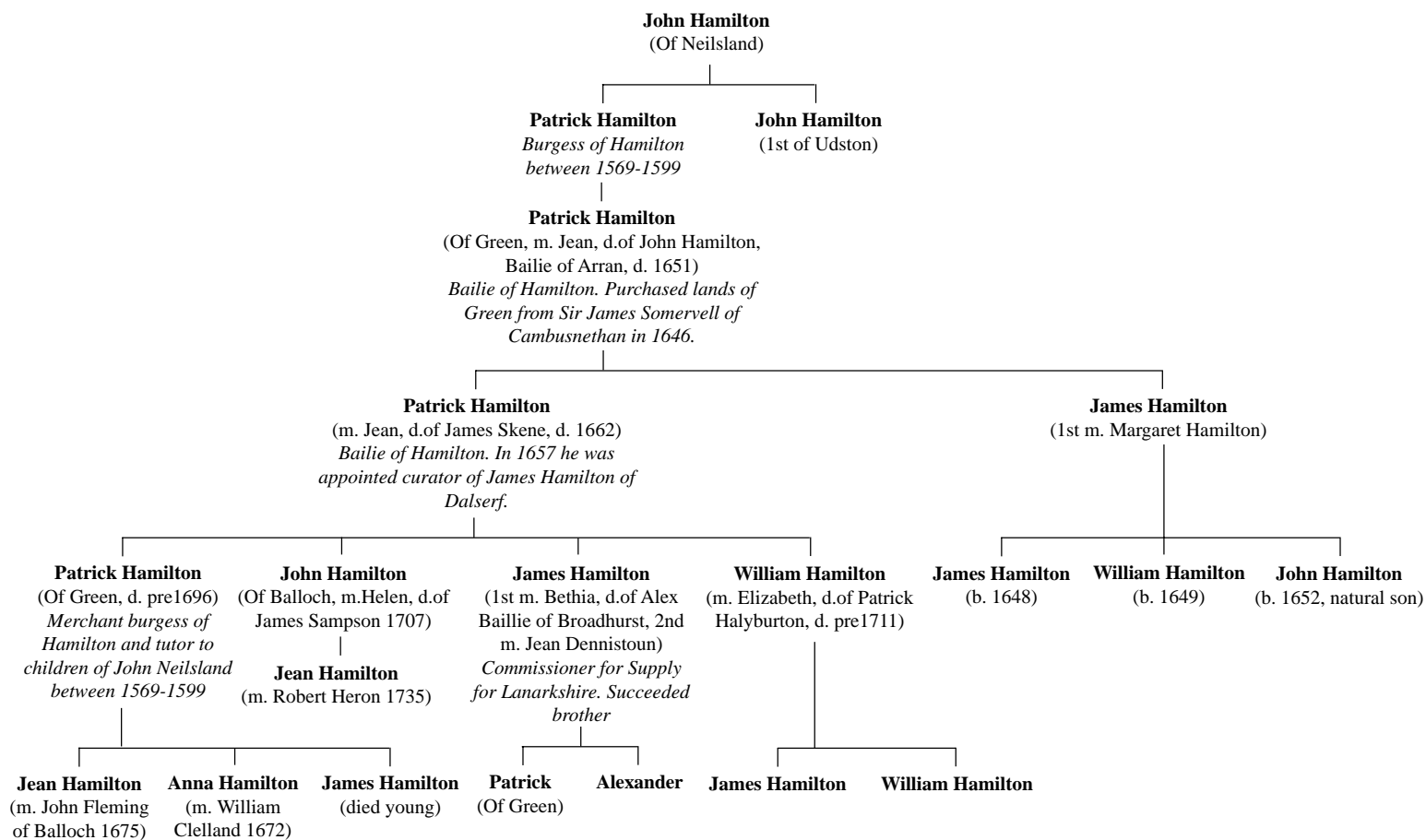
HAMILTON of KITTIEMUIR

LOCKHART FAMILY

PAST PROPRIETORS



Hamilton of Green (Parish of Stonehouse)



DOUGLAS / HAMILTON

DOUGLAS / HAMILTON cont.

DOUGLAS / HAMILTON cont.

MOWAT FAMILY

EARLY HAMILTON FAMILY

HAMILTON of GOSLINGTON

HAMILTON of GOSLIN cont.

HAMILTON of CATCASTLE

HAMILTON of CANDER

HAMILTON of RAPLOCH

HAMILTON of RAPLOCH cont.

HAMILTON of STONEHOUSE

HAMILTON of GREEN

HAMILTON of MILLBURN

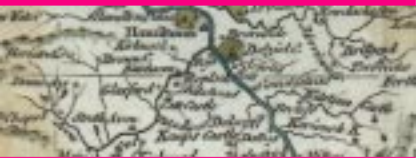
HAMILTON of CROFTHAD

SINCLAIR / LOCKHART

SINCLAIR / LOCKHART cont.

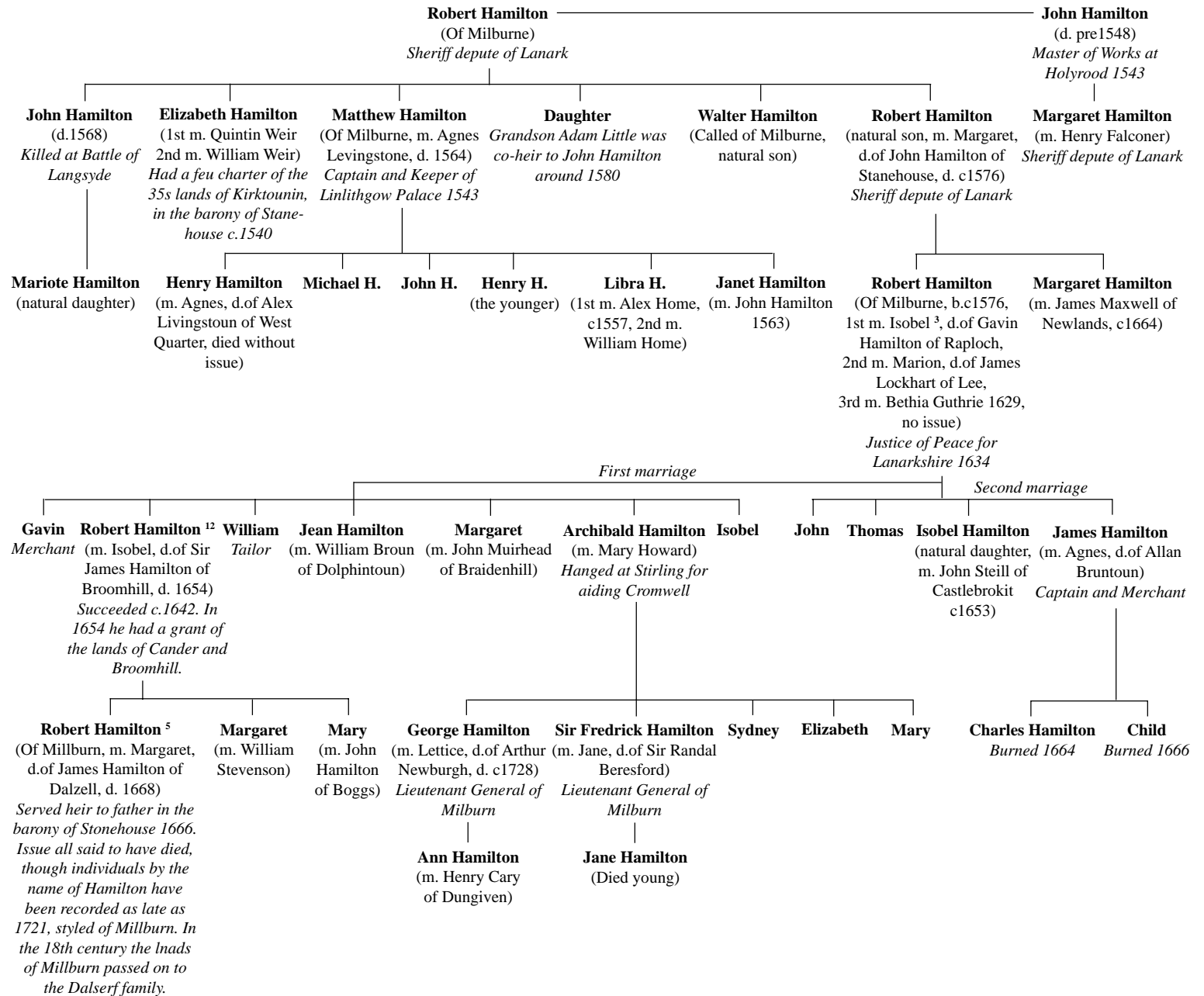
HAMILTON of KITTIEUIR

LOCKHART FAMILY



Hamilton of Millburn (Parish of Dalserf)

Differing references state this family descended from Thomas Hamilton of Darngarbar, while another states the family is derived of Robert, son of John Hamilton of Whistleberry. House of Hamilton suggests the earliest records are of two brothers as listed below.



DOUGLAS / HAMILTON

DOUGLAS / HAMILTON cont.

DOUGLAS / HAMILTON cont.

MOWAT FAMILY

EARLY HAMILTON FAMILY

HAMILTON of GOSLINGTON

HAMILTON of GOSLIN cont.

HAMILTON of CATCASTLE

HAMILTON of CANDER

HAMILTON of RAPLOCH

HAMILTON of RAPLOCH cont.

HAMILTON of STONEHOUSE

HAMILTON of GREEN

HAMILTON of MILLBURN

HAMILTON of CROFTHHEAD

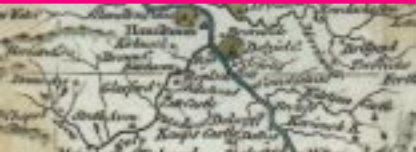
SINCLAIR / LOCKHART

SINCLAIR / LOCKHART cont.

HAMILTON of KITTIEUIR

LOCKHART FAMILY

PAST PROPRIETORS



DOUGLAS / HAMILTON

DOUGLAS / HAMILTON cont.

DOUGLAS / HAMILTON cont.

MOWAT FAMILY

EARLY HAMILTON FAMILY

HAMILTON of GOSLINGTON

HAMILTON of GOSLIN cont.

HAMILTON of CATCASTLE

HAMILTON of CANDER

HAMILTON of RAPLOCH

HAMILTON of RAPLOCH cont.

HAMILTON of STONEHOUSE

HAMILTON of GREEN

HAMILTON of MILLBURN

HAMILTON of CROFTHEAD

SINCLAIR / LOCKHART

SINCLAIR / LOCKHART cont.

HAMILTON of KITTIEMUIR

LOCKHART FAMILY

Hamilton of Crofthead

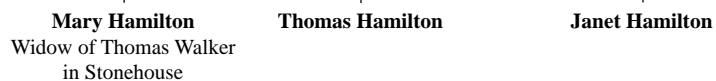
Adam Hamilton

Of Crofthead, debtor to Andrew Hamilton in Cruckitstone, 1618

John Hamilton

(m. May Quharrie, d. 1668)

In Crofthead in Kitemure 1645, debtor to estate of John Hamilton, in the town of Hamilton



Gavin Hamilton

Appears in Crofthead 1685 as debtor to James Hamilton in Hesledean

James Hamilton

(d.1685)

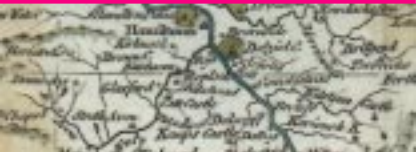
Robert Hamilton

(Of Crofthead, d.1701)

Daughter

(m. Thomas Mutter)

PAST PROPRIETORS



DOUGLAS / HAMILTON

DOUGLAS / HAMILTON cont.

DOUGLAS / HAMILTON cont.

MOWAT FAMILY

EARLY HAMILTON FAMILY

HAMILTON of GOSLINGTON

HAMILTON of GOSLIN cont.

HAMILTON of CATCASTLE

HAMILTON of CANDER

HAMILTON of RAPLOCH

HAMILTON of RAPLOCH cont.

HAMILTON of STONEHOUSE

HAMILTON of GREEN

HAMILTON of MILLBURN

HAMILTON of CROFTHAD

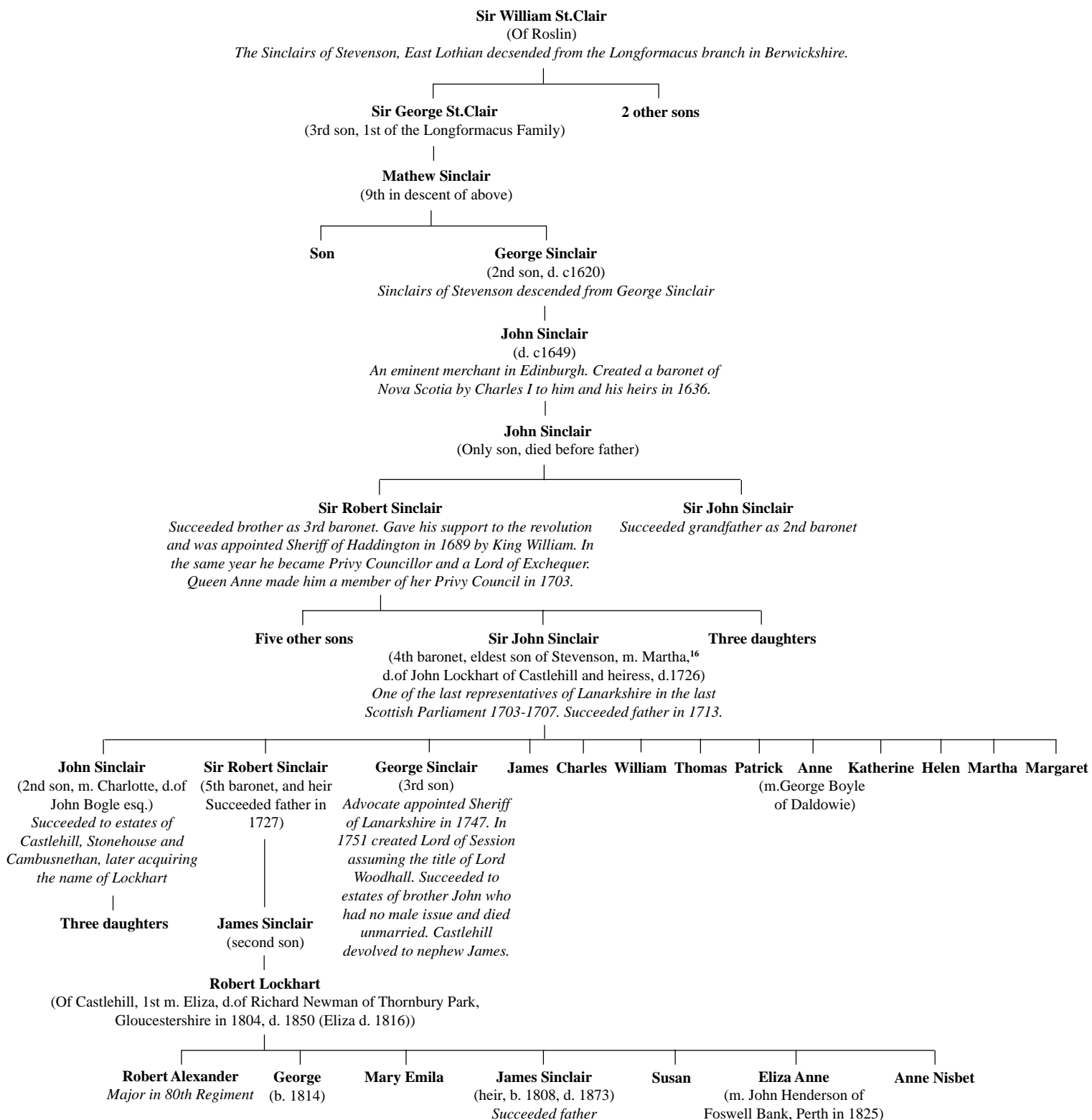
SINCLAIR / LOCKHART

SINCLAIR / LOCKHART cont.

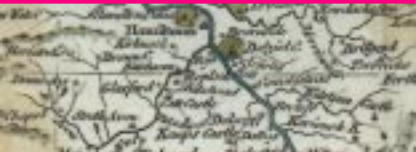
HAMILTON of KITTIEMUIR

LOCKHART FAMILY

Sinclair-Lockhart Family



PAST PROPRIETORS

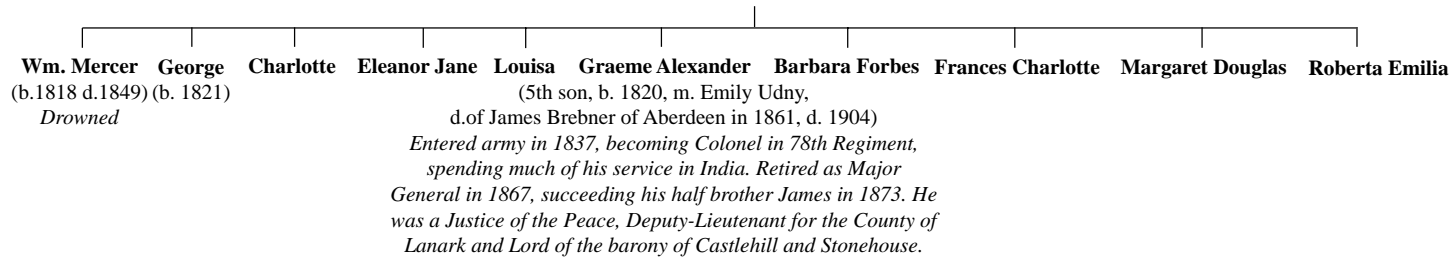


Sinclair-Lockhart Family *continued*

Robert Lockhart

(Of Castlehill, 2nd m. Charlotte Simpson, d.of Captain William Mercer in 1817)

Children all assumed name Sinclair



DOUGLAS / HAMILTON

DOUGLAS / HAMILTON cont.

DOUGLAS / HAMILTON cont.

MOWAT FAMILY

EARLY HAMILTON FAMILY

HAMILTON of GOSLINGTON

HAMILTON of GOSLIN cont.

HAMILTON of CATCASTLE

HAMILTON of CANDER

HAMILTON of RAPLOCH

HAMILTON of RAPLOCH cont.

HAMILTON of STONEHOUSE

HAMILTON of GREEN

HAMILTON of MILLBURN

HAMILTON of CROFTHEAD

SINCLAIR / LOCKHART

SINCLAIR / LOCKHART cont.

HAMILTON of KITTIEUIR

LOCKHART FAMILY

PAST PROPRIETORS



Hamilton Family of Patrickholm and Kittiemuir

DOUGLAS / HAMILTON

DOUGLAS / HAMILTON cont.

DOUGLAS / HAMILTON cont.

MOWAT FAMILY

EARLY HAMILTON FAMILY

HAMILTON of GOSLINGTON

HAMILTON of GOSLIN cont.

HAMILTON of CATCASTLE

HAMILTON of CANDER

HAMILTON of RAPLOCH

HAMILTON of RAPLOCH cont.

HAMILTON of STONEHOUSE

HAMILTON of GREEN

HAMILTON of MILLBURN

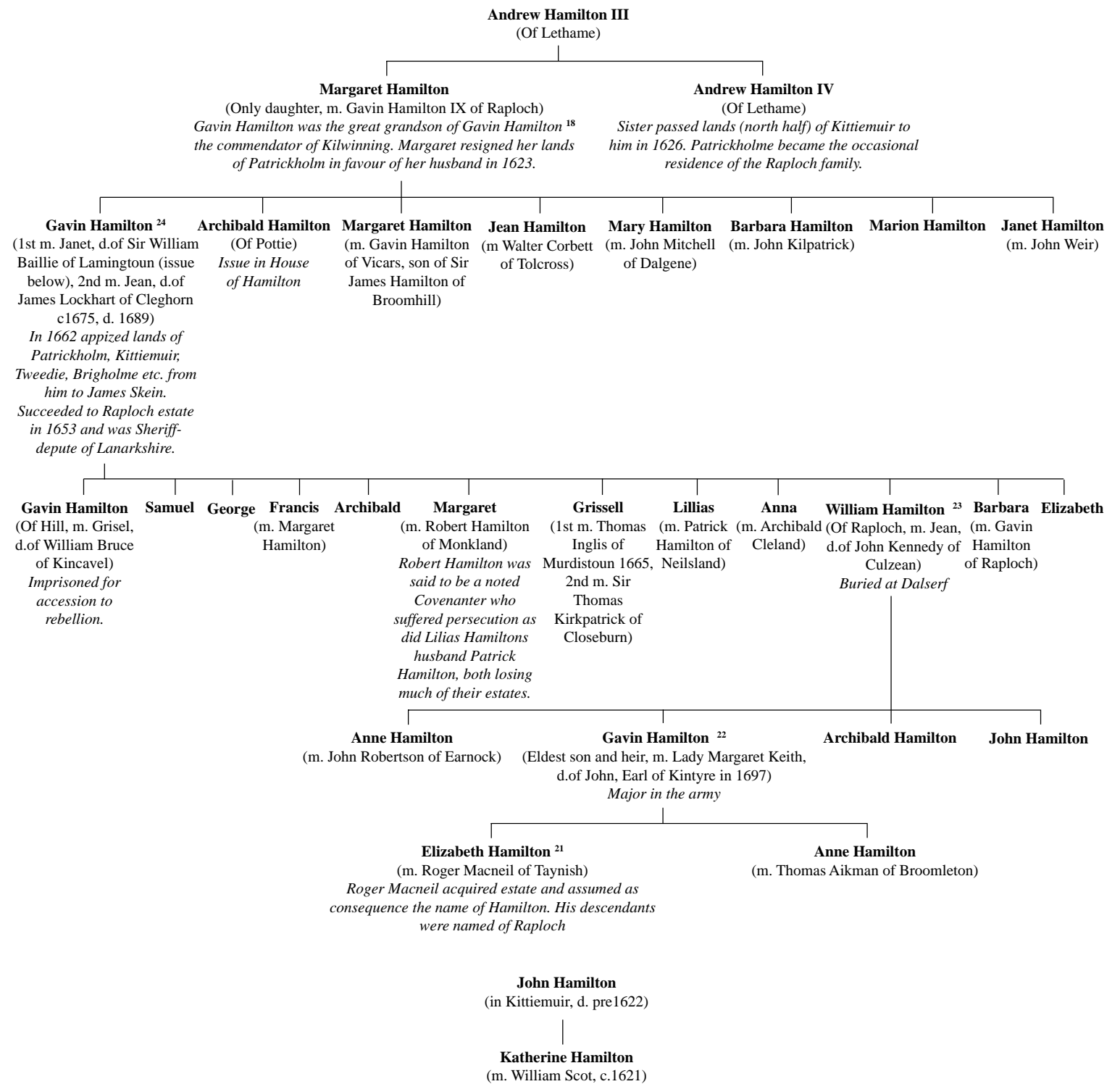
HAMILTON of CROFTHHEAD

SINCLAIR / LOCKHART

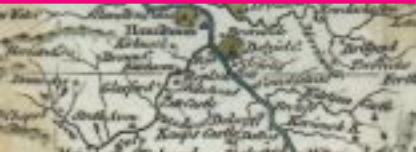
SINCLAIR / LOCKHART cont.

HAMILTON of KITTIEMUIR

LOCKHART FAMILY



PAST PROPRIETORS



DOUGLAS / HAMILTON

DOUGLAS / HAMILTON cont.

DOUGLAS / HAMILTON cont.

MOWAT FAMILY

EARLY HAMILTON FAMILY

HAMILTON of GOSLINGTON

HAMILTON of GOSLIN cont.

HAMILTON of CATCASTLE

HAMILTON of CANDER

HAMILTON of RAPLOCH

HAMILTON of RAPLOCH cont.

HAMILTON of STONEHOUSE

HAMILTON of GREEN

HAMILTON of MILLBURN

HAMILTON of CROFTHHEAD

SINCLAIR / LOCKHART

SINCLAIR / LOCKHART cont.

HAMILTON of KITTIEUIR

LOCKHART FAMILY

Lockhart Family

Simon Lockard

It is assumed Simon was the originator of the ancestors of Lockharts of Lee



Malcolm Lockard

Held his lands of Kyle under the name of Stewart.



Sir James Lockhart

(Of Lee)



Sir James Lockhart

(Of Lee)

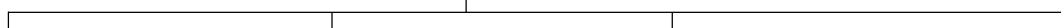
Commissioner of Small Barons to Parliament 1607



Sir James Lockhart

(Of Lee, b. 1596, 1st m. Helen, d.of Alexander Fairly of Baird (no issue)
2nd m. Martha, d.of Sir George Douglas of Madington)

Became Lord of Session in Scotland and later Lord Justice Clerk as Lord Lee in the reign of Charles I. He obtained a charter in 1667 of the lands and barony of Stonehouse and the right of patronage of the church of Stonehouse and the lands called Vicars land. Martha was maid of honour to Queen Mary. Commissioner to Parliament.



Sir William Lockhart

(Of Lee, eldest son, d. 1675,

1st m. Margaret d.of Sir John Hamilton of Orbiston, 2nd m. Robina, d.of John Sewster, Oliver Cromwell's neice)
In 1674 Sir William, knight, ambassador to France was served heir to his father in the templar lands of Woodlands, Cat Castle, Stonehouse and half the lands called Tofts. Commissioner to Parliament 1695.

Robert Lockhart

Killed

John Lockhart

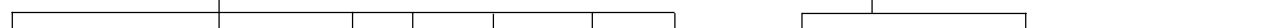
(Of Castlehill, d. 1694)

Took seat as Lord Castlehill in 1665. Member of the Committee of War for county in 1648. Became a member of the faculty of Advocates by Cromwells commissioners for the administration of justice in 1656 and was appointed Lord of Justiciary in 1671. He represented the county in parliament in 1690 and 1693.

Sir George Lockhart

(Of Carnwath, second son,

1st m. Barbara Gilmour, 2nd m. Philadelphia, d.of 4th Lord Wharton)
Became ancestor of Sir Norman McDonald Lockhart of Lee and Carnwath.



Cromwell Lockhart¹⁷
(Of Lee, eldest son)
Served heir to father in 1675

Richard Lockhart
(Of Lee, m. Jean d.of Sir Patrick Houston)

Julius

John

(Of Lee, 7th son)
Member of Parliament 1715-1718

Martha

Robina

James Lockhart
(d. 1696)

Martha Lockhart¹⁶
(1st m. John Sinclair, younger of Steinstoune, pre 1696, 2nd m. Cromwell Lockhart of Lee¹⁷, (cousin))
Succeeded James Lockhart (brother). The descendants of this marriage took the name of Lockhart and the designation of Castlehill, Stonehouse and Cambusnethan.

George Lockhart
(Of Carnwath)