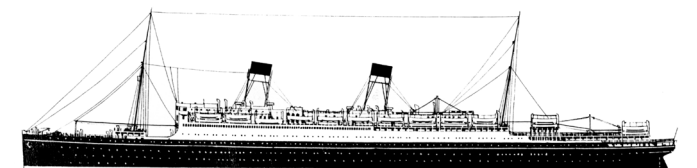
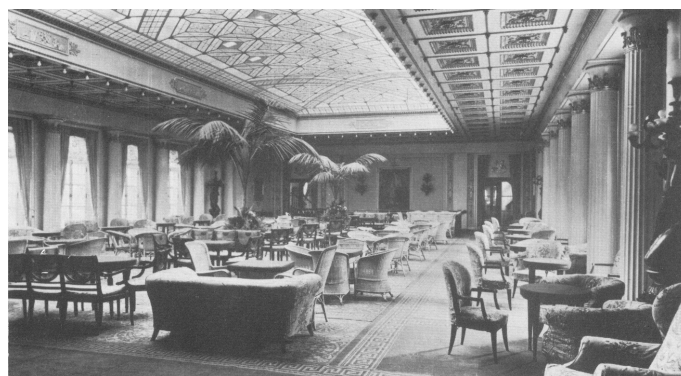


All aboard the Homeric

- On 17th December 1913 Norddeustcher Lloyd's launched the *Columbus* in Danzig (now Gdansk).
- Construction of ship put on hold in August 1914 due to outbreak of World War I.
- On 28th June 1919 the Treaty of Versailles surrenders *Columbus* to Britain.
- In June of 1920 the *Columbus* is purchased by White Star Line from government forming a three ship service comprising of the *Olympic* (replaced *Titanic*) and the *Majestic*. The ship was completed by Harland and Wolff in Danzig before being renamed the *Homeric* replacing the *Britannic*; sister ship of *Titanic* sunk in the Mediterranean.
- On 21st January 1922 the *Homeric* arrives at Southampton where after minor alterations she makes her maiden voyage to New York on 21st February 1922.
- Although slow in comparison to its sister ships the roll-less virtues of her construction and luxurious fittings prove popular with passengers and crew. The *Homeric* was constructed with mass immigration in mind with large steerage areas.
- In 1923 her original coal powered system is overhauled and refitted with an oil fuelled propulsion system.
- In the 1920's the United States began restricting immigration while the White Star Line suffered from the Great Depression of the early 1930's. In 1928 the *Oceanic* was announced as the *Homeric's* replacement.



- On June 1st 1932 the *Homeric* made her final Atlantic crossing before becoming a full-time cruise ship. From Southampton and Liverpool the *Homeric* sailed to destinations in the Canary Isles, West Africa and the Mediterranean.
- In February 1934 the White Star Line merged with Cunard and the *Homeric* was placed on the surplus list. One of her last missions was to attend King George V's Jubilee fleet review in July 1935. In September 1935 she was laid up off the Isle of Wight.
- Attempts to bring her back to Germany fell through. In 1935 she was withdrawn from service and laid up off Ryde, Isle of Wight. Sold for scrap in February 1936 for £74,000 she was broken up by Thomas W. Ward at Inverkeithing.
- Travelling showman, John Edward Sheeran bought the *Homeric's* chandelier at a flea market in Kirkcaldy. He then purchased the ship's 1st class dining room at the scrap yard in Inverkeithing where her interior furnishings were dismantled and transported by 14 wagons to Stonehouse Railway Station.
- On 22nd January 1937 the 'Rex' was opened in Argyle Street by Sir Harry Lauder and was hailed as 'Lanarkshire's King of Picture Houses'. The picture house was furnished with a chandelier, pillars, mahogany panel fittings and staircase.
- John Sheeran was a showman by trade, originally dealing in slot machines before it was outlawed. He invested his savings in the Rex picture house, which cost £1400 to refurbish. The evolution of television, put an end to this era and the picture house was redeveloped, returning to dealing in slot machines and amusements when the trade was legalised once more.



- The picture house proved very popular especially during the war years. The first picture shown was 'It happened one night' starring Clark Gable and Claudette Colbert. At this time the seating prices were 6^D for the front stalls, 9^D for the back, 1/3^D for the front balcony and 1/- for the rear balcony.
- During the war years the Rex was also used for war fund cabaret performances. Sir Harry Lauder was the chairman of this committee and was a 'regular' in entertaining audiences and wounded soldiers. Mr Sheeran was a founder member of the committee, raising over £1700 for local soldiers. He died in June 1967 at the age of 73. Many celebrities graced the Rex including Will Fyffe CBE on Sunday 21st February 1943. The Rex was the only stage on which Harry Lauder and Will Fyffe appeared together on the same bill.
- Recently a cruise ship called the '*Homeric*' was built, and now sails from Dover round the Arctic to Scandinavia. The Rex today is used as a store for the family business, but inside it still retains many of the features and character that made it one of the most attractive picture houses in the country.



Hamilton Advertiser; January 23rd 1937 NEW CINEMA'S FIRST NIGHT

"Full homage was done to what can be genuinely termed Lanarkshire's King of picture houses, appropriately named 'The Rex', when it was opened on Thursday night, and a crowded house appreciated and admired this splendidly fitted up structure. Seated to accommodate 750 persons, what was once the concert hall of the "Homer", has been transformed into one of the finest cinemas for its size in and no doubt out of the county, and Mr Sheeran may indeed feel proud of the achievement. Film fans will find nothing left to be desired regarding sound equipment and the F.I. (Film Industry) outfit has to be heard to be appreciated. No doubt many will avail themselves at an early opportunity to go, to hear and see what has been a long felt want in the village, and which now having become such a splendid reality deserves every encouragement."
(*It Happened One Night* first picture)



Homeric Specifications:

Builder:	Schichau, Danzig
Launch Date:	17th December 1913
Length:	236.4m
Beam:	25m
Deep draught:	11m
Funnels:	2
Masts:	2
Construction:	Steel
Tonnage:	34351 gross tons
Engines:	Steam triple expansion engines powering two propellers (32000 horsepower)
Service Speed:	18 knots (19.5 knots after 1923 refit)
Passengers:	2766 passengers (529 1st class; 487 2nd class; 1750 3rd class) initially; (523 1st class; 841 2nd class; 314 3rd class) in 1930 3rd class
Crew:	730 initially; (625 in 1930)

<p>Monday, 23rd April.—For 1 Day Only Joe Kirkwood, Jr. Elyse Knox Gentleman Joe Palooka also The Cobra Strikes</p> <p>Tuesday & Wednesday For 2 Days Gloria Jean, Jimmy Lydon in An Old Fashioned Girl also Border Bandits</p> <p>Thursday & Friday For 2 Days George Montgomery, Ellen Drew Indian Scout also Stork Bites Man</p> <p>Saturday For 1 Day Only William Bendix, Claire Trevor in The Babe Ruth Story</p>	<p>Coming Attractions</p> <p>Outpost In Morocco</p> <p>Sword of the Avenger</p> <p>ELLEN</p> <p>The Manager of this Cinema would be grateful if Patrons would kindly use the ash trays provided.</p> <p>THANK YOU.</p> <p>J. Robertson, Printer, Wellgate St., Larkhall</p>	<p>The REX CINEMA STONEHOUSE</p> <p>Monthly Programme</p> <p>TIMES OF SHOWING: Monday—Doors open 6 p.m. Continuous Commencing 6.15 & 8.30</p> <p>Tues. to Fri.—Doors open 7 p.m. Commencing 7.15</p> <p>Saturday—Two Distinct Houses at 6.15 & 8.30 p.m. Doors open 6 p.m. Childrens Matinee on Saturday at 2 p.m.</p> <p>PRICES OF ADMISSION 1/6 1/- and 9d.</p> <p>No Half-Price on Saturday</p>
--	--	---

<p>Monday, 2nd April.—For 1 Day Only Jimmie Davis, Margaret Lindsay in Louisiana</p> <p>Tuesday & Wednesday Two Days William Bendix, Grace Bradley in Two Knights in Brooklyn also Jigsaw</p> <p>Thursday & Friday Two Days William Bendix, Dennis O'Keefe in Cover Up Also Silent Conflict</p> <p>Saturday One Day Only Bonita Granville, Don Castle in The Guilty Also The Land of the Lawless</p>	<p>Monday, 9th April.—For 1 Day Only John Irland, Sheila Ryan in Railroaded also Prairie Express</p> <p>Tuesday & Wednesday Two Days Maria Montez, Jean Pierre in Siren of Atlantis also Susie Steps Out</p> <p>Thursday & Friday Two Days Mickey Rooney, Thomas Mitchell in The Big Wheel Also The Daring Caballero</p> <p>Saturday One Day Only Richard Basehart, Audrey Totter in TENSION</p>	<p>Monday, 16th April. — For 1 Day Only Stuart Erwin, Glenda Farrell in Heading for Heaven also Valley of Fear</p> <p>Tuesday & Wednesday Two Days Paul Henreid, Joan Bennett in THE SCAR also Campres Sleuth</p> <p>Thursday & Friday Two Days Eddie Albert, Gale Storm in The Dude Goes West also The Big Fix</p> <p>Saturday One Day Only Michael O'Shea, Nancy Coleman in VIOLENCE</p>
---	---	---